

Omtool's AccuRoute Connector for SAP enables flexible and reliable fax delivery of documents to and from the SAP R/3[®] environment using the standard SAPconnect[™] interface and Omtool's AccuRoute[®] enterprise fax application.

Documents created and sent from SAP are transmitted via SAPconnect to the AccuRoute fax server via Omtool's connector for SAP. AccuRoute receives the document, converts it to a fax compatible format, automatically creates a cover page, and queues the fax-ready document for delivery over the public telephone system via intelligent fax modem hardware from Dialogic[®]/Brooktrout.

End User Benefits

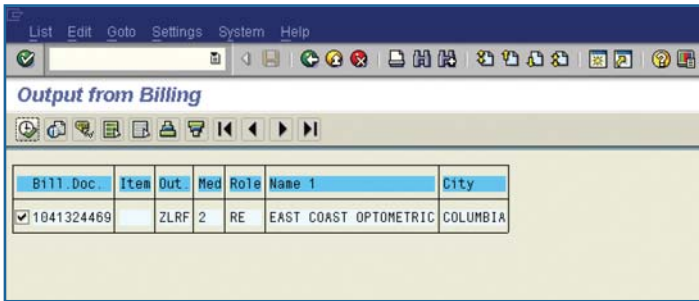
- Allows users of SAP R/3 software systems to send faxes directly from the SAPoffice[™] application. Confirmation of delivery is provided back through the SAPconnect gateway to the sending user.
- Faxes can be submitted from the SAPoffice application or from a SAPscript[™].
- Once a fax has been submitted, an SAPoffice user or SAPscript program can request and receive the current status of the fax from the AccuRoute fax server.
- Supports a variety of file formats as attachments for outbound faxes including documents from MS office, PCL5, PostScript, PDF, and many more. The AccuRoute fax server will automatically convert these file attachments to fax image format as part of the fax send process. Attached files may be in virtually any format.
- Allows users of SAP R/3 systems to receive faxes directly into the SAPoffice interface.
- AccuRoute's sophisticated inbound routing features can route incoming faxes automatically to the intended recipient, including SAP users.
- Inbound faxes may be received and routed directly to a network printer or database.
- AccuRoute, configured with its connector for SAP, allows the SAP user's fax number (which AccuRoute uses to identify the user) to be mapped to an e-mail address so the AccuRoute server can send notifications to the e-mail system instead of or in conjunction with SAP.

System Requirements and Recommendations

- SAP R/3 software, version 4.6 or higher
- AccuRoute is installed in a Windows 2003 server (with SP1 or later); the SAP server can run on any operating system supported by SAP R/3.
- The AccuRoute SAP Connector is based on the SAPconnect interface for connecting any messaging application to the SAP R/3 system.
- A single AccuRoute fax server can support multiple "threads" in its connection to any given SAP server to increase throughput for high volume fax messaging.
- A single AccuRoute fax server can support multiple AccuRoute Connectors for SAP and other messaging connectors (Exchange or Notes) installed in the same or remote connected locations, enabling the system to scale appropriately with demand levels.

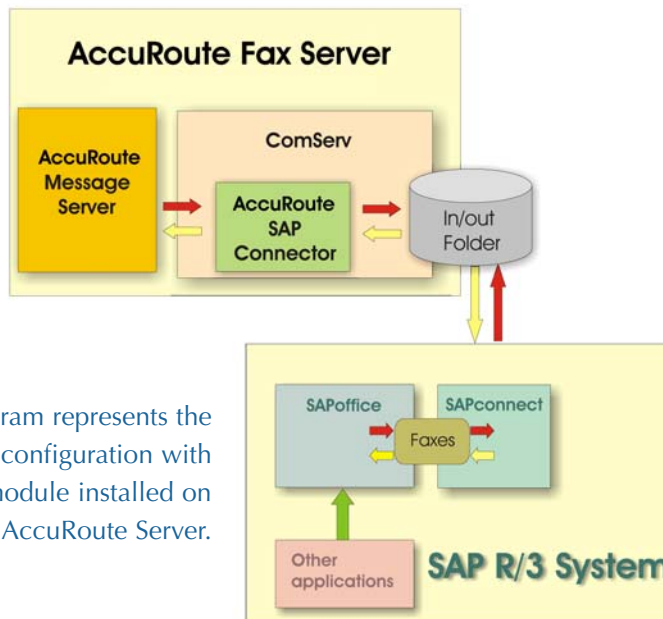
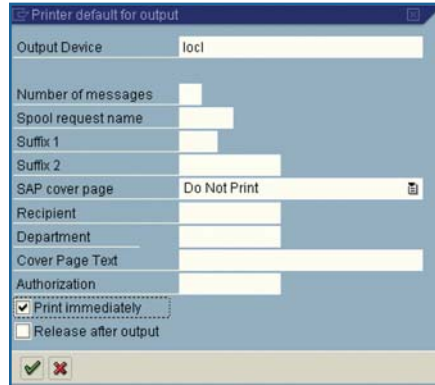
Recommended configuration diagram and connector screen shots are located on back.





User selects the invoice he wishes to fax.

AccuRoute will automatically fax the document to the fax number in the customer record.



This diagram represents the "recommended" configuration with the ComServ module installed on the Omtool AccuRoute Server.

